



Republic of the Philippines
Department of Environment and Natural Resources
MINES AND GEOSCIENCES BUREAU
Regional Office No. VIII

MacArthur Park, Candahug, Palo, Leyte 6501

Tel. No. (+63 53) 832-4214; E-mail: region8@mgb.gov.ph; Website: region8.mgb.gov.ph

January 31, 2023

MGB Geo Ref. No. 2023-01-049

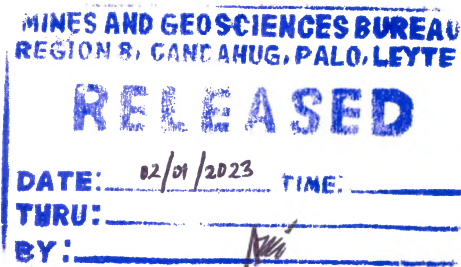
MR. JOSEPH P. IDUSORA

Student

Rizal Technological University

College of Engineering and Industrial Technology

Mandaluyong Campus and Pasig Campus



Dear Mr. Idusora,

This is in reference to your Freedom of Information request dated January 25, 2023 requesting for Vulnerability map in Catarman, Northern Samar.

We are pleased to provide you with the digital copy of the Flood and Hazard Map of Catarman, Northern Samar.

Please note that following guidelines must be followed upon using/reproducing the abovementioned data:

- Geologic Maps is Unpublished/Unofficial
- Acknowledge and attribute MGB as the data source.
- Use the data/information only for the purpose indicated in the request.
- Shall not alter and modify the data in any way.

Very truly yours,


CARLOS A. TAYAG, CESE
Regional Director 

Encl.: A/s



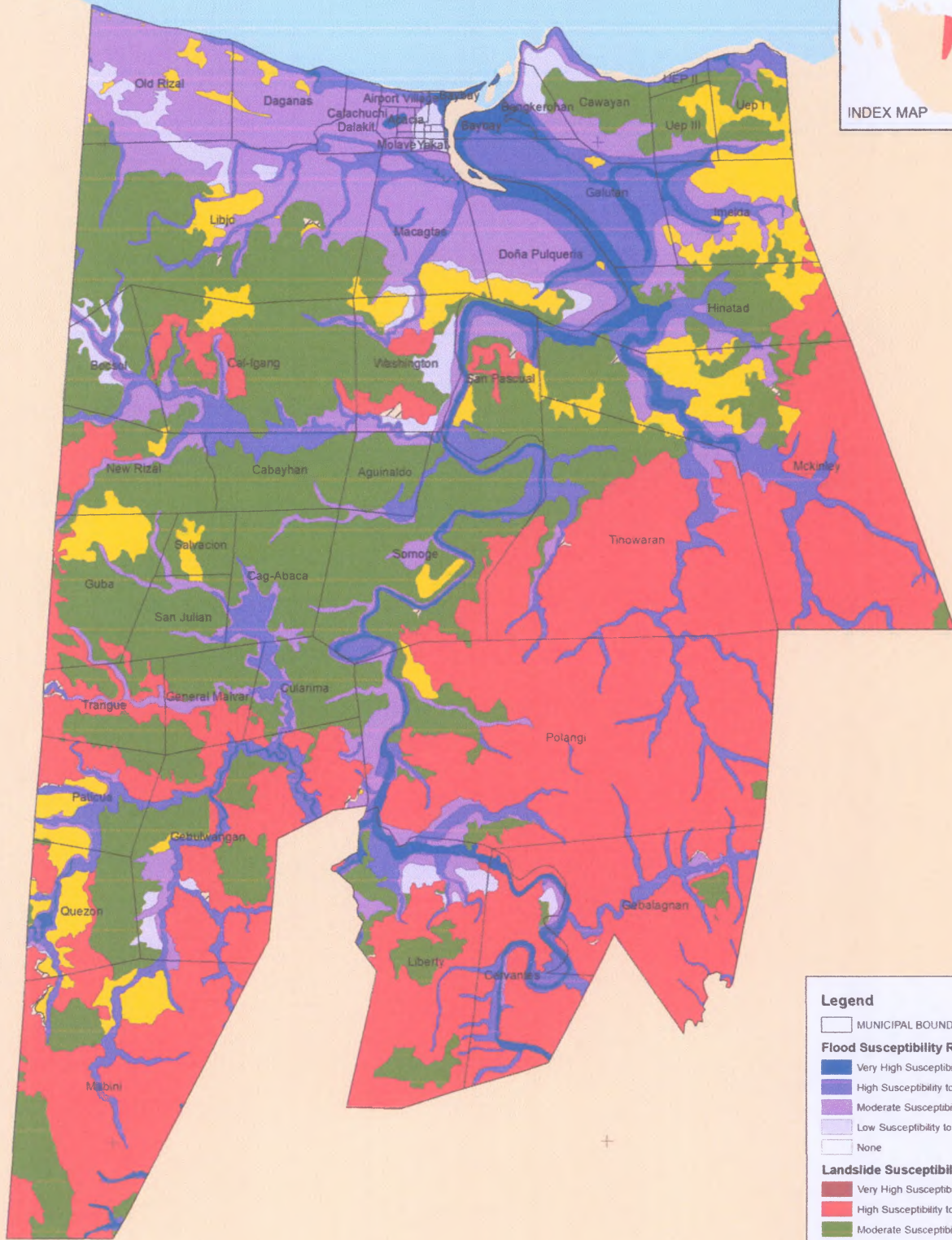
020123-R08-48753



Department of Environmental and Natural Resources
Mines and Geosciences Bureau
Office of the Regional Director

**“MINING SHALL BE PRO-PEOPLE AND PRO-ENVIRONMENT
IN SUSTAINING WEALTH CREATION AND IMPROVED QUALITY OF LIFE”**

FLOOD AND LANDSLIDE HAZARD MAP MUNICIPALITY OF CATARMAN, NORTHERN SAMAR PROVINCE

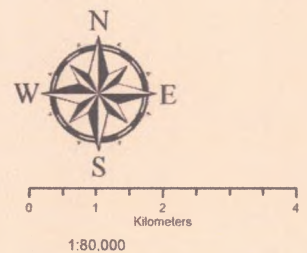
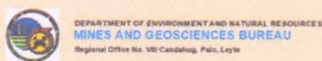


Legend

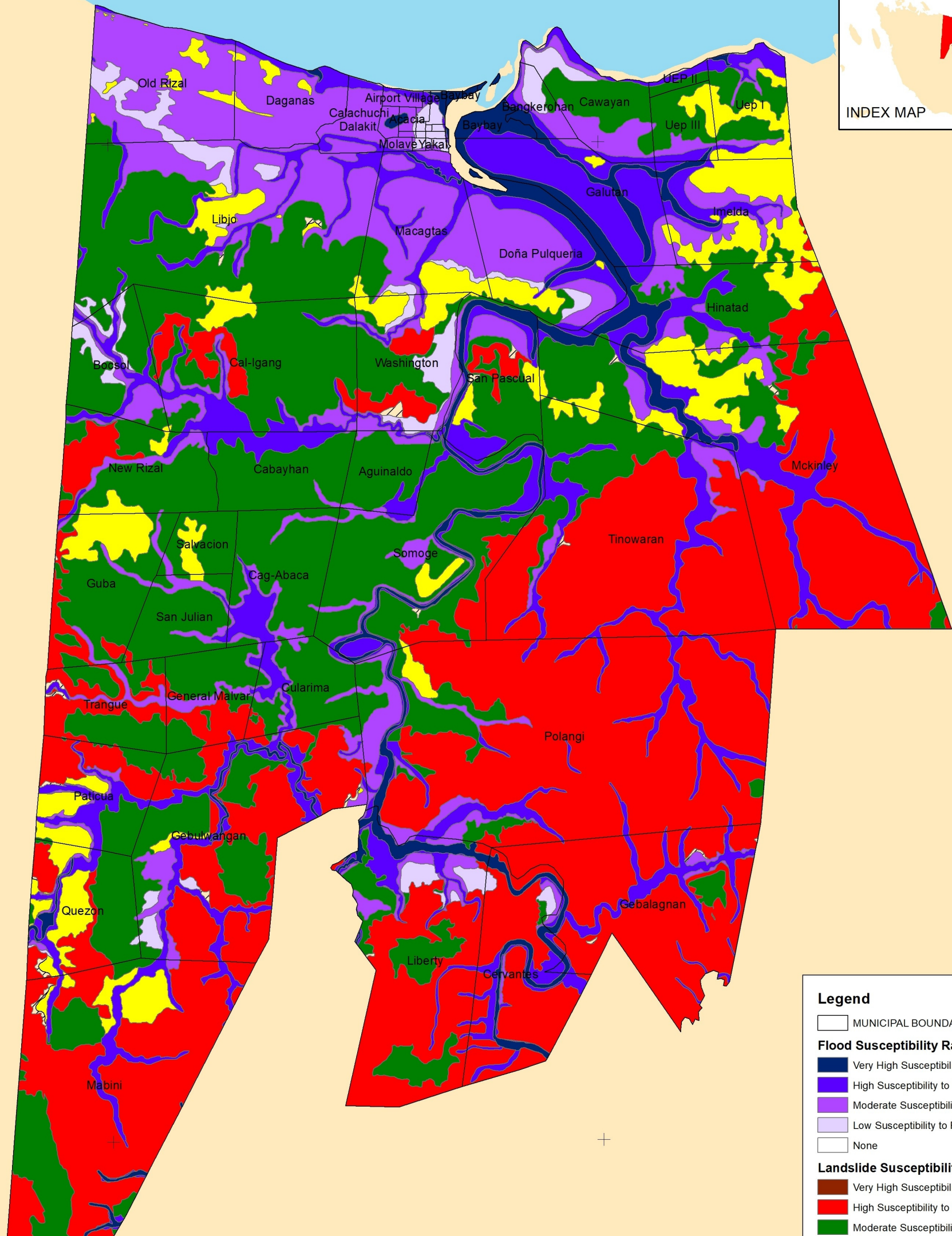
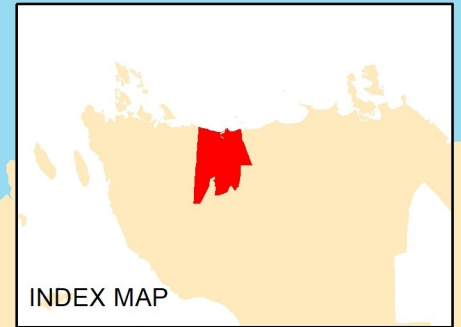
- MUNICIPAL BOUNDARY
- Flood Susceptibility Rating**
 - Very High Susceptibility to Flooding
 - High Susceptibility to Flooding
 - Moderate Susceptibility to Flooding
 - Low Susceptibility to Flooding
 - None
- Landslide Susceptibility Rating**
 - Very High Susceptibility to Landslide
 - High Susceptibility to Landslide
 - Moderate Susceptibility to Landslide
 - Low Susceptibility to Landslide
 - Debris flow path/Possible accumulation zone
 - None

Coordinate System: Luzon 1911 Transverse Mercator
 Projection: Transverse Mercator
 Datum: Luzon 1911
 false easting: 500 000 0000
 false northing: 0 0000
 central meridian: 123 0000
 scale factor: 0 9996
 latitude of origin: 0 0000
 Units: Meter

Data Sources :
 MGB Geohazard Assessment Team
 Lands Geological Survey Division
 Geosciences Division, MGB Regional Office VIII
 Philippine Statistics Authority
 National Mapping and Resource Information Authority



FLOOD AND LANDSLIDE HAZARD MAP MUNICIPALITY OF CATARMAN, NORTHERN SAMAR PROVINCE



Legend

- MUNICIPAL BOUNDARY
- Flood Susceptibility Rating**
 - Very High Susceptibility to Flooding
 - High Susceptibility to Flooding
 - Moderate Susceptibility to Flooding
 - Low Susceptibility to Flooding
 - None
- Landslide Susceptibility Rating**
 - Very High Susceptibility to Landslide
 - High Susceptibility to Landslide
 - Moderate Susceptibility to Landslide
 - Low Susceptibility to Landslide
 - Debris flow path/Possible accumulation zone
 - None

Coordinate System: Luzon 1911 Transverse Mercator
 Projection: Transverse Mercator
 Datum: Luzon 1911
 false easting: 500,000.0000
 false northing: 0.0000
 central meridian: 123.0000
 scale factor: 0.9996
 latitude of origin: 0.0000
 Units: Meter

Data Sources :
 MGB Geohazard Assessment Team
 Lands Geological Survey Division
 Geosciences Division, MGB Regional Office VIII
 Philippine Statistics Authority
 National Mapping and Resource Information Authority

